

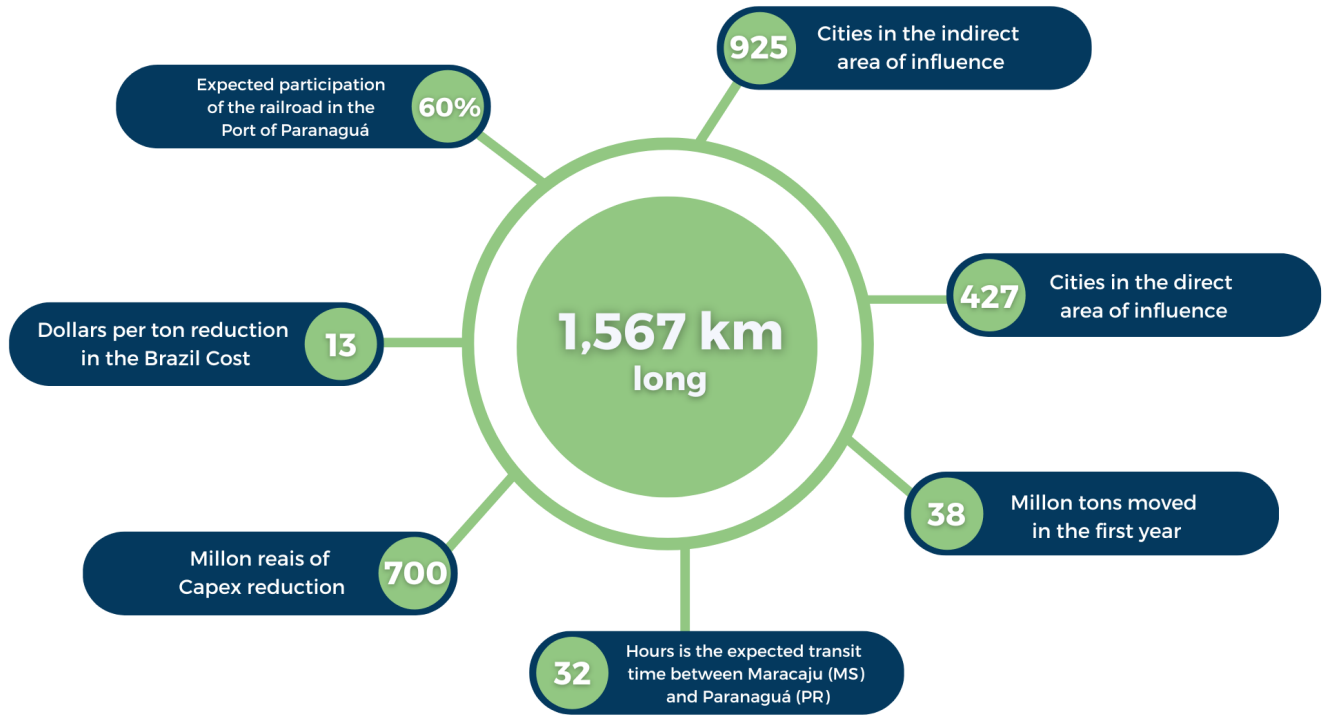
The Railway Section

05/07/2021



SIMULTANEOUS ENGINEERING MAKES IT POSSIBLE TO DEFINE THE BEST ROUTE

The railroad that goes from Maracaju (MS) to Paranaguá (PR) was planned taking into consideration the environmental impact and technical feasibility studies. From this joint action, the most viable route was outlined based on the aspects that encompass the project's sustainability. The constant concern with mitigating the effects in the areas of influence guided the studies in the search for the implementation of the best railroad stretch.



Indigenous lands and traditional communities are very relevant for Nova

Ferroeste. Using the premises of respect and valorization, it was sought to deviate from the communities and units of integral protection.